

Statement  
of Intent  
2026 to  
2030

REANNZ

# CONTENTS /

Foreword from the Board	3
About REANNZ	4
Role and operations	5
Operating environment	6
Strategic intent	7
Strategy on a page	10
Focus areas, priorities and major initiatives	12
1. Preferred partner for eResearch infrastructure	12
2. Leverage the sector's collective strength to increase impact	13
3. Infrastructure innovation hub	15
4. Building Organisational Capability	17
Assessing our performance	18
Organisational health and capability	20
Structure	20
Board committees	21
Management teams	21
Capability	21
Leadership, accountability and culture	21
Accountability	22
Corporate	22
Reporting	22
Annual Report	22
Statement of Intent	22
Statement of Performance Expectations	22
Quarterly reports	22
Other information	22

Presented to the House of Representatives under Sections 150–157 of the *Crown Entities Act 2004*.

REANNZ is the Research and Education Advanced Network New Zealand.  
Level 5, PlanIT House 5/22 The Terrace, Wellington Central, Wellington 6011



This work is licensed under the Creative Commons Attribution 3.0 New Zealand License. In essence, you are free to copy, distribute and adapt the work, as long as you attribute the work to REANNZ and abide by the other licence terms. To view a copy of this license, visit [www.creativecommons.org/licenses/by/3.0/nz](http://www.creativecommons.org/licenses/by/3.0/nz)

# FOREWORD

## FROM THE BOARD /

On behalf of the Board, I am pleased to present the Statement of Intent for REANNZ for 2026-2030.

REANNZ is a cornerstone of knowledge sharing capability for the research, education and innovation sectors, enabling the exchange of world-changing ideas and linking New Zealand to high-performance, data-intensive global research and technology networks.

REANNZ's role is to enable New Zealand's research, education and innovation sectors to connect, collaborate and succeed at scale.

As the New Zealand research ecosystem becomes more data-intensive, distributed and globally connected, the ability for ideas, knowledge and data to move freely, securely and at scale is critical. REANNZ enables this by providing the specialist infrastructure, platforms and expertise that connect people and institutions across New Zealand and the world.

REANNZ also acts as a kaitiaki of a nationally significant capability. It has a responsibility not only to deliver high-performance infrastructure, but to steward it in a way that supports sovereignty, safeguards data and ensures long-term resilience for the sector.

Central to this is a commitment to equitable access. REANNZ enables researchers, educators and innovators across New Zealand to access capabilities, including high-performance computing and advanced networking, that would otherwise be beyond reach. In doing so, it supports broader participation, lifts system capability and ensures that opportunity is not constrained by institutional scale or location.

This Statement of Intent sets out REANNZ's strategic direction and the role it will play over the medium term. It reflects a clear strategic direction, strengthening its role as a national provider of advanced digital research infrastructure, while expanding its role in shaping the future infrastructure ecosystem, accelerating the adoption of emerging technologies and enabling more coordinated action across the sector.

In doing this, REANNZ supports the delivery of the Government's research priorities and contributes to building a more productive, connected and digitally enabled economy.

REANNZ enters this period following significant change. The integration of New Zealand eScience Infrastructure (NeSI) on 1 July 2025 brought together capabilities in networking, advanced computing and data. This represents a step-change in scope and complexity, combining distinct platforms, technologies and specialist teams into a single, coordinated organisation.

Since then, REANNZ has developed a new strategy and operating model to position it to deliver more effectively. Over the coming year, REANNZ will focus on embedding this operating model and building a strong foundation for growth, financial sustainability and innovation.

REANNZ is now well positioned to act at a system level, working across institutional and sector boundaries to address shared challenges and support more coordinated, efficient use of infrastructure. This includes scaling its core services, supporting innovation and making it easier for members and users to access the capabilities they need.

As a Crown-owned company, governed by an independent Board of Directors, REANNZ will continue to operate with a strong focus on effective governance, financial discipline and value for money to maximise the impact of Government investment. This Statement of Intent reflects that balance by setting a clear direction while maintaining a focus on sustainability, efficiency and value.

The Board is confident that REANNZ is well positioned to fulfil its role as steward of this critical national capability, enabling the exchange of ideas that underpins discovery, progress and impact for New Zealand.



**Helen Robinson ONZM**  
Chair

30 June 2026

# ABOUT REANNZ /

Research and Education Advanced Network New Zealand (REANNZ) is a Crown-owned company and membership organisation that supports New Zealand's research, education and innovation sectors. It provides the shared digital infrastructure and expertise these sectors rely on to work effectively, both in New Zealand and internationally.

REANNZ's infrastructure is engineered to meet the specialist performance needs of researchers, educators and innovators. It enables them to work with large volumes of data, collaborate across institutions, and access advanced computing capability. It has three core components: The National Research and Education Network (NREN), Advanced Computing and Data; and research workforce development.

The NREN is a purpose-built fibreoptic network that operates differently from commercial networks. It is supported by trust, security, and collaboration services that allow data transfer at a scale not consistently possible on standard networks. More than 120 countries operate an NREN, together forming the Global Research and Education Network (GREN) which underpins global, data intensive research.

REANNZ provides national-scale advanced computing and data analysis capability, including through its Mahuika platform, supported by specialist software and expertise to process and analyse massive datasets; and train complex models to accelerate the research process. Paired with the NREN, it enables large-scale national and global research that would otherwise not be possible.

Beyond these core services, REANNZ provides services to help researchers get greater value from its infrastructure. This includes expert advice, hands-on support, training, tools and consultancy services to help the sector adopt new technology, use it more confidently, and deliver greater impact for New Zealand.

Working across the sector, REANNZ helps overcome challenges of distance, scale and fragmentation by identifying shared needs and delivering sector-wide solutions that no single institution could deliver on its own. This collective approach enables stronger collaboration and supports greater impact from New Zealand's research, education and innovation ecosystem.

Members and users of REANNZ include public and private research organisations, wananga, universities, institutes of technology and polytechnics, museums, libraries, and government organisations.

# ROLE AND OPERATIONS /

REANNZ delivers:

## Network and connectivity

- > As the NREN provider for New Zealand, REANNZ provides a purpose-built, resilient, high-speed and high-capacity network that delivers reliable and cost-effective connectivity for members, regardless of their location.

## Network protection

- > REANNZ partners with experts to gain enhanced cyberthreat intelligence and build cybersecurity resilience that helps protect members' institutions from malicious actors.

## Federated identity and access management

- > REANNZ provides trusted and secure federated identity and access management that enables seamless, global access to online content, services, subscriptions and resources, reducing the number of accounts that users and their IT support teams must manage.

## Advanced computing

- > REANNZ provides the infrastructure that supports data-intensive work delivered at speed and scale. Through these platforms, users can access high-capacity central processing units (CPU), graphical processing units (GPU) and high memory nodes; work interactively in web-based notebooks, containers, and virtual lab environments; access an extensive software library; and scale code and expand projects.

## Data services

- > REANNZ provides the tools and technologies needed to store, process, analyse, visualise, transfer, and share high volumes of data.

## Training and consultancy

- > REANNZ supports users to maximise their use of its infrastructure and tools through training and development delivered by local and international experts. One-on-one or group support for individual projects and teams is also available.

# OPERATING ENVIRONMENT /

The research, innovation and education sectors, and the technologies that support them, continue to evolve rapidly. Globally, investment and activity are focusing on artificial intelligence and machine learning, remote and cloud-based computing, and seamless access to trusted research environments. These shifts are reshaping how research is conducted and the digital infrastructure required to support it.

In New Zealand, there is strong recognition of the role that research and education play in driving innovation and economic growth. However, institutions are operating in an environment of fiscal restraint at the same time as demand for more advanced, data-intensive and secure digital capability continues to grow.

Keeping pace with technological change requires ongoing investment, while competition for highly skilled technical and research talent is strong both nationally and internationally. Expectations around data sovereignty, data security, and digital equity are also increasing, placing additional demands on shared infrastructure providers.

To deliver greater impact and remain current with rapidly evolving technology, the sector must collaborate and harness their collective strengths. No single institution can sustainably invest in the full range of digital infrastructure, platforms and specialist expertise required. This will be critical to attract and retain talent in New Zealand, deliver research excellence, support future economic growth, and maximise the value of Government investment.

In recent years, research and education sectors have undergone significant structural reform aimed at strengthening coordination, reducing duplication and fragmentation, and improving impact. In 2025, REANNZ was asked to bring in the services and capability previously provided by New Zealand eScience Infrastructure (NeSI), substantially increasing its scale and scope.

Since then, REANNZ has worked closely with its members and users to develop a new strategy that reflects the needs, priorities and the challenges facing the sector.

To support the research, innovation and education sectors, REANNZ must be more than a provider of digital infrastructure and services. It must work with the sectors to overcome barriers, coordinate collective action, leverage new technologies and support experimentation to ensure New Zealand's researchers, educators and innovators remain world-class now and into the future.



# STRATEGIC INTENT /

**REANNZ's mission is to connect researchers, educators and innovators so they can change the world.**

**REANNZ's vision is a high-performing, future-ready ecosystem, seamlessly connected by world-class digital infrastructure.**

REANNZ is a trusted provider for New Zealand's research, innovation and education sectors. As technology and research practices continue to evolve rapidly, it must strengthen its role and move from keeping pace to leading the way.

As a national provider of eResearch infrastructure, REANNZ is uniquely positioned to connect, empower and advocate for the sector. It is also well positioned to support government priorities for eResearch and relevant government strategies.

The integration of NeSI services into REANNZ has expanded its capability, bringing together networking, computing and data. Brokering a broader range of HPC and other services will enable streamlined access for researchers and support emerging needs such as AI-driven analytics and large-scale simulations. Future benefits may include accelerated research timelines, improved efficiency, economies of scale, and enhanced national capability in data-intensive science.

New Zealand's research, innovation and education ecosystem is small but highly capable. To maximise the value created by the sector for NZ Inc, there is a need to decrease fragmentation; create critical mass and scale efficiencies; build stronger connection to the innovation sector; and increase agility to respond to evolving technology and sector needs, particularly in critical areas like AI.

As New Zealand's representative within the global community of NRENs, REANNZ will strengthen its role in enabling international research collaboration, expanding partnerships with leading NRENs, facilitating data-intensive cross-border projects, and positioning New Zealand as a trusted contributor to global science and innovation networks.

By leveraging its expertise and global partnerships, REANNZ will help navigate technological change and work with the sector to design and deliver the future infrastructure needed.

REANNZ will also enable greater access to technology and support broader participation through a fair and transparent pricing model, helping the sectors confidently navigate changing technology to create impact for New Zealand.

Together, these factors require REANNZ to evolve its strategic role, not only continuing to deliver core infrastructure but expanding how it supports, connects and leads the sector.

## Strategic Shifts

REANNZ will continue to be a provider of core critical services for the sector, AND make the following strategic shifts:

Today REANNZ is...	In future REANNZ will also...
An infrastructure provider	<b>Work with the sector to design the infrastructure ecosystem of the future</b>
A service provider	<b>Support the sector to leverage new technologies and ways of working</b>
A fast follower, enabling access to established tools and technologies through the GREN	<b>Become a sector innovation hub, supporting experimentation and new ideas</b>
A sector partner	<b>Become a sector leader and advocate: a focal point for collective action to solve common challenges</b>

As well as being a trusted provider of core digital infrastructure, REANNZ will work with the sector to co-design the future infrastructure eco-system, helping shape what’s needed next, not just supplying what exists today.

REANNZ will keep delivering reliable core services, while doing more to support organisations to use new technologies and adopt new ways of working. REANNZ will focus on helping the sector to optimise the value of technology and make it easier for people to engage with what it offers.

REANNZ will continue to be a fast follower, enabling access to trusted tools and technologies through the GREN while growing into a sector innovation hub, supporting experimentation, testing new ideas, and exploring emerging technologies such as AI and quantum computing.

REANNZ will step into a coordination, advocacy and leadership role. It will bring organisations together around common challenges and opportunities, help align effort where it makes sense, and support collective action when working together delivers better results than working alone.

REANNZ will:

- > support the sector to navigate changing technology,
- > anticipate needs and work with the sector to plan and deliver new infrastructure,
- > broker as well as build new infrastructure,
- > provide sector leadership, advising government on eResearch infrastructure and advocating for sector needs, and
- > deliver strategic co-ordination, leveraging the collective strengths of the sector to build cohesion and achieve more for NZ Inc.

## Strategic focus areas

### > Preferred partner for eResearch infrastructure

REANNZ will be the preferred partner for eResearch infrastructure, lowering barriers to access, delivering at scale, and brokering services to increase choice and value. A strong focus on customer experience and engagement will drive greater participation across the sector.

### > Leveraging the sector's collective strength

Leveraging the sector's collective strengths to enable institutions to do more together than they can alone, through shared capability, federated access to tools and services, and coordinated approaches to investment and delivery. This includes a stronger leadership and advocacy role to align effort and increase impact. REANNZ will also leverage the benefits of its global ecosystem to provide greater value for money for the sector.

### > Infrastructure innovation hub

Supporting the sector to explore, test, and adopt emerging technologies, providing access to advanced platforms, tools and collaborative environments that enable new ways of working and supports the sectors to move at pace and accelerate research outcomes.

### > Building organisational capability

We will focus on organisational capability, ensuring the leadership, systems, and delivery discipline required to support the sector, scale services effectively, and deliver on its expanded role.



# A STRATEGIC CONNECTOR AND INNOVATION AND

MISSION / REANZ CONNECTS AND EMPOWERS RESEARCHERS, I

VISION / A THRIVING RESEARCH, INNOVATION AND EDUCATION ECOSYSTEM

## Preferred partner for eResearch infrastructure

- > Lower the bar to access eResearch infrastructure and capability
- > Deliver at scale
- > Broker and aggregate to increase choice
- > Deliver outstanding customer service and experience
- > Build awareness and participation

## Leverage the sector's collective strength to increase impact

- > Community building to increase capability and cohesion
- > Federate access to innovative tools, infrastructure and services that institutions can't access alone
- > Consistent tools and frameworks
- > Coordinated investment
- > Sector leadership and advocacy

# ND ENABLER FOR RESEARCH, ND EDUCATION

INNOVATORS AND EDUCATORS SO THEY CAN CHANGE THE WORLD.

M, CONNECTED SEAMLESSLY BY WORLD-CLASS DIGITAL INFRASTRUCTURE.

## Infrastructure innovation hub

- > Support the sector to leverage new technology to innovate
- > Broker as well as build
- > Consultancy to support research innovation
- > Access to cutting-edge platforms, tools and research environments for collaboration and experimentation

## Enhancing organisational capability

- > Ensure the right capability is in place to deliver on the strategy and support better outcomes for the sector
- > Provide effective leadership, and clear accountabilities and responsibilities

# FOCUS AREAS, PRIORITIES AND MAJOR INITIATIVES /

## ① Preferred partner for eResearch infrastructure

To connect and empower the sector, REANNZ must broaden the reach and impact of its services, enabling more seamless access to the infrastructure that allows ideas, knowledge and data to flow at scale. REANNZ will redesign its membership models, lower barriers to access, and offer a broader range of services.

Delivering outstanding customer experience and service will be critical. REANNZ will actively engage with the sector to build awareness and participation and grow its customer base. It will continue to leverage the GREN network to support innovation, increase resiliency and bring new products to the sector.

### FY2026/27 Initiatives

- > Provide greater certainty and transparency by implementing a refreshed pricing model, underpinned by a defined service catalogue
- > Improve customer service by redesigning REANNZ's innovation and customer lifecycles
- > Make it easier for customers to access and use services by developing a new customer portal for digital eResearch infrastructure
- > Improve service quality and reliability for customers by implementing a new operating model
- > Strengthen awareness, engagement and participation across the sector by developing a refreshed communications and engagement strategy
- > Reduce environmental impact by developing an environmental sustainability strategy

### Years 2–3: Scale and grow

- > Increase national impact and reach by growing the REANNZ customer base
- > Implement the environmental sustainability strategy
- > Scale and expand the service catalogue to meet evolving sector needs
- > Embed service design to ensure consistency, usability and value
- > Further develop the customer portal to enable self-service access to infrastructure, tools and support for researchers and member organisations

## Years 4–5: Innovate and build momentum

- > REANNZ is widely recognised as the preferred supplier of digital eResearch infrastructure for the research, education and innovation sectors
- > Delivering an expanded and responsive range of services aligned to sector needs
- > Customer portal provides a primary access point for REANNZ products and services, supporting streamlined user experience

### Outcomes

- > Reliable and seamless service delivery and customer experience
- > Sector-wide scalable and accessible services
- > Increased access and choice
- > High awareness, engagement and participation across the sector
- > Broader customer base and a lower bar to access services

### Performance Measures

- > Number of new customers
- > Member and user satisfaction
- > Sector awareness and engagement
- > Network reliability, security and availability and capacity to support data-intensive research
- > HPC reliability and availability

## ② Leverage the sector's collective strength to increase impact

Widespread sector reform and funding challenges mean that acting collectively to increase impact for New Zealand is more critical than ever. Greater coordination enables ideas, capability and investment to circulate more effectively across the system, building critical mass and amplifying impact.

REANNZ is uniquely positioned to be a community builder, supporting greater uptake of digital eResearch, building a strong talent pipeline and facilitating access to a wider range of tools, services and infrastructures than any institution could access alone.

Supporting the sector to develop common tools and frameworks around common issues such as data storage – and coordinate and work together where it makes sense – will be important to drive efficiency and economies of scale.

REANNZ will support the research community to increase skills and uptake across all eResearch disciplines. It will consolidate sector needs to leverage, and coordinate investment in, innovative tools and technology; and ensure that Government investment in REANNZ is leveraged to create more research impact.

## FY2026/27 Initiatives

- > Strengthen sector capability and connection through a community building and training strategy
- > Improve the effective and secure use of data through a research data strategy
- > Strengthen measurement of REANNZ's research impact
- > Increase coordination and impact of investment by working with the sector and Government to identify opportunities
- > Identify shared needs and opportunities for impact through REANNZ-hosted sector events (APAN62, eResearch26 and the CEO Forum)

## Years 2–3: Scale and grow

- > Scale and expand training offering and build new communities of practice
- > Ensure the sector has strategic autonomy over key data sets
- > Establish common tools and frameworks based on sector need
- > Grow access to new technologies and value for money through coordinated investment
- > Develop and pilot new research impact measures

## Years 4–5: Innovate and build momentum

- > Sector connected through communities of practice, common training, tools and frameworks
- > NZ sovereign data is protected while still enabling open access to support national and international collaboration.
- > Training offering continuously evolving to meet sector needs
- > Consolidating sector needs to leverage new tools and technology
- > Coordinated sector investment in new technologies
- > Incorporate new research impact measures into REANNZ KPIs

## Outcomes

- > Capable and connected sector
- > Increased uptake, sophistication and impact of digital eResearch
- > Coordinated investment to increase choice and value
- > Workforce development - stronger skills pipeline with a focus on skills mobility and new technologies
- > Research impact: sector has access to tools and technologies to deliver ground-breaking research that creates value and impact for NZ Inc

## Performance Measures

- > Number of new infrastructure options offered
- > Number of new research environments piloted
- > Number of new consultancies
- > Number of collaborative projects involving multiple REANNZ members

## 3 Infrastructure innovation hub

New technologies like AI are evolving rapidly and changing the way that research is done, reshaping how ideas are generated, tested and advanced.

In future, REANNZ will provide a broader range of platforms and advanced technologies. It will provide access to tools and research environments for collaboration and experimentation, enabling ideas to move rapidly from exploration to application.

In addition, REANNZ will continue to align itself closely with the initiatives funded out of the NZ Institute of Advanced Technology (NZIAT) to ensure our technology roadmap and capability building activity supports their ambitions.

REANNZ will continue to act as a fast follower in the international ecosystem; work with the sector to drive innovation and the adoption of new technologies; and connect the research and education sectors to the broader innovation sector for pre-commercial research.

### FY2026/27 Initiatives

- > Support new and emerging technology by implementing sector-endorsed technology roadmap
- > Pilot trusted research and federated learning environments to support collaboration and experimentation
- > Federate access to two new infrastructures to increase access and choice
- > Improve customer service by Integrating REANNZ's proprietary platform Mahuika and new infrastructure offerings into the customer portal
- > Continue to work with sector and officials to secure funding to establish AI infrastructure at scale
- > Build relationships with the innovation sector to increase sector capability

### Years 2–3: Scale and grow

- > Scale and expand infrastructure offerings through brokered services and federation
- > Scale up collaboration platforms to enhance collaboration
- > Scale innovation initiatives based on technology roadmap
- > Scale and expand consultancy offering
- > Support commercialisation pipeline by growing innovation sector customer base

### Years 4–5: Innovate and build momentum

- > Technology roadmap and service catalogue continuously evolving to support latest technologies
- > Consultancy model supporting a wide range of innovative research projects
- > Sector sharing knowledge and collaborating across a range of collaboration platforms
- > Access to a wide range of regional, national and international infrastructures

## Outcomes

- > Flexible, scalable range of infrastructure offerings increasing access and choice
- > Increased collaboration, experimentation and knowledge sharing
- > Capable and cohesive sector

## Performance Measures

- > Number of new infrastructure options offered
- > Number of new research environments piloted
- > Number of new consultancies
- > Number of collaborative projects involving multiple REANNZ members

## 4 Building Organisational Capability

REANNZ's mission is to connect and empower researchers, innovators and educators so they can change the world. Delivering on this requires the organisational capability to enable the seamless exchange of ideas, knowledge and data across an increasingly integrated and complex system. Effective leadership, and clear accountabilities and responsibilities, are critical to ensure success, and financial sustainability, across an integrated organisation that has doubled in size over the past twelve months.

Change is underway to deliver on commitments given to the sector and ensure REANNZ is positioned to succeed.

### FY2026/27 Initiatives

- > Implement a new operating model and organisational structure to support the delivery of the REANNZ strategy
- > Deliver the REANNZ culture and leadership development programme
- > Continue professional development in te ao Māori to grow cultural capability

### Years 2–3: Scale and grow

- > Clear roles, responsibilities and accountabilities
- > Operating model is enabling REANNZ to scale and grow to meet sector needs
- > Senior Leadership Team setting clear direction and priorities
- > Culturally capable staff

### Years 4–5: Innovate and build momentum

- > Innovation and outstanding service delivery is enabled by REANNZ leadership, people and capability
- > Strong collective sense of purpose
- > Staff working with a range of Māori research organisations to support their work

### Outcomes

- > Productive and committed team supported by effective leaders and managers
- > Employer of choice
- > Innovative and customer-focused culture
- > Culturally competent staff supporting Māori research organisations

### Performance Measures

- > Staff engagement score
- > Number of staff trained in te ao Māori

# ASSESSING OUR PERFORMANCE /

## Becoming the preferred partner for eResearch infrastructure

### Outcomes sought

- > Reliable and seamless service delivery and customer experience
- > Sector-wide scalable and accessible services
- > Increased access and choice
- > High awareness, engagement and participation across the sector
- > Broader customer base and a lower bar to access services

### Performance Measures

- > Number of new customers
- > Member and user satisfaction
- > Sector awareness and engagement
- > Network reliability, security and availability and capacity to support data-intensive research
- > HPC reliability and availability

## Leveraging the sector's collective strength to increase impact

### Outcomes sought

- > Capable and connected sector
- > Increased uptake, sophistication and impact of digital eResearch
- > Coordinated investment to increase choice and value
- > Workforce development - stronger skills pipeline with a focus on skills mobility and new technologies
- > Research impact: sector has access to tools and technologies to deliver ground-breaking research that creates value and impact for NZ Inc

### Performance Measures

- > Number of training and community building events
- > Training and community building options meet sector expectations
- > Number of coordinated investments in new technology
- > Number of case studies showcasing research impact and new impact KPIs in place

## Becoming a hub for infrastructure innovation

### Outcomes sought

- > Flexible, scalable range of infrastructure offerings increasing access and choice
- > Increased collaboration, experimentation and knowledge sharing
- > Capable and cohesive sector

### Performance Measures

- > Number of new infrastructure options offered
- > Number of new research environments piloted
- > Number of new consultancies
- > Number of collaborative projects involving multiple REANNZ members

## Building organisational capability

### Outcomes sought

- > Productive and committed team supported by effective leaders and managers
- > Employer of choice
- > Innovative and customer-focused culture
- > Culturally competent staff supporting Māori research organisations

### Performance Measures

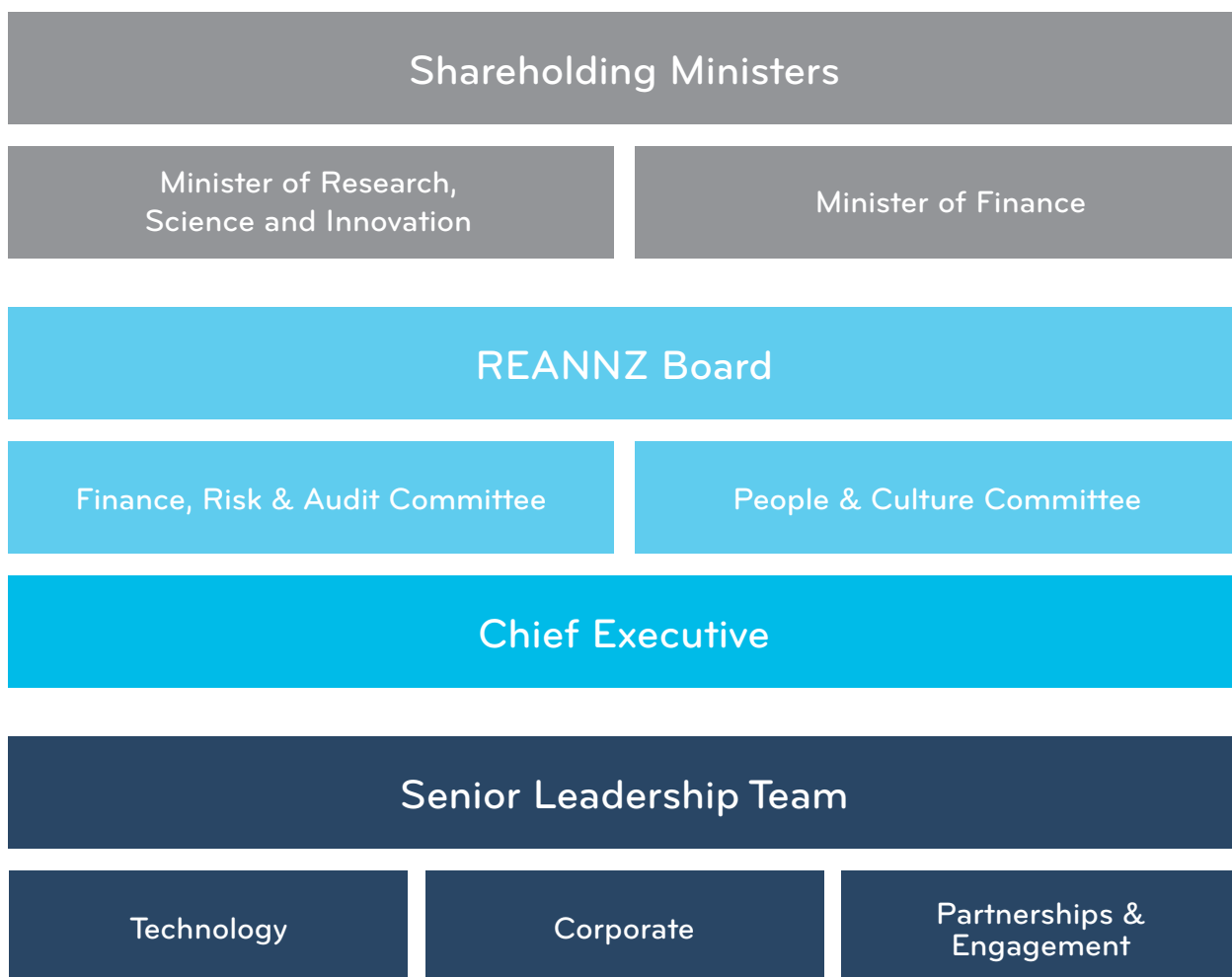
- > Staff engagement score
- > Number of staff trained in te ao Māori

# ORGANISATIONAL HEALTH AND CAPABILITY /

## Structure

REANNZ is governed by a Board of Directors, appointed by its shareholding Ministers following agreement by Cabinet. REANNZ currently has six appointed directors.

The Board appoints the Chief Executive, who is responsible for the day-to-day operations of REANNZ. REANNZ's governance and management structure is shown below:



## Board committees

The REANNZ Board has two committees that assist the Board in the discharge of its responsibilities.

### Finance, risk and audit

Integrity of financial reporting, internal controls and accounting policies; the nature, scope, objectives and functions of internal and external audit; and producing accurate financial statements in compliance with appropriate legal requirements and accounting standards.

### People and culture

People and culture strategy and policy, remuneration, employment conditions and performance management relating to the senior executives, and health and safety strategy, policy and practices.

## Management teams

REANNZ teams support of functions across technical, corporate and engagement operations to meet the needs of members and stakeholders:

## Capability

As a small organisation, REANNZ is critically dependent on its people. The specialised nature of REANNZ’s work means they are highly valued.

REANNZ promotes and supports a flexible working environment that encourages the team to maintain a positive work-life balance. This includes both formal and informal flexible working hours as well as the option to split time between remote working and office spaces.

## Leadership, accountability and culture

REANNZ’s leadership culture is built on encouraging all members of the team to lead by example, supporting others to behave in a way that is consistent with our culture and values:

Values	Actions
<b>Trust</b> Earning trust and enabling discovery	<b>We are</b> <ul style="list-style-type: none"> <li>&gt; <b>Transparent</b></li> <li>&gt; <b>Accountable</b></li> <li>&gt; <b>Understanding</b></li> <li>&gt; <b>Humble</b></li> </ul>
<b>Collaboration</b> Together, everyone achieves more	<b>We are</b> <ul style="list-style-type: none"> <li>&gt; <b>United</b></li> <li>&gt; <b>Respectful</b></li> <li>&gt; <b>Inclusive</b></li> <li>&gt; <b>Tolerant</b></li> </ul>
<b>Innovation</b> Redefining the possible	<b>We are</b> <ul style="list-style-type: none"> <li>&gt; <b>Resourceful</b></li> <li>&gt; <b>Forward thinking</b></li> <li>&gt; <b>Empowered</b></li> <li>&gt; <b>Courageous</b></li> </ul>
<b>Excellence</b> Delivering our best, every time	<b>We are</b> <ul style="list-style-type: none"> <li>&gt; <b>Customer centric</b></li> <li>&gt; <b>Reliable</b></li> <li>&gt; <b>Pragmatic</b></li> <li>&gt; <b>Solution focused</b></li> </ul>
<b>Integrity</b> The foundation of all we do	<b>We are</b> <ul style="list-style-type: none"> <li>&gt; <b>Honest</b></li> <li>&gt; <b>Fair</b></li> <li>&gt; <b>Trustworthy</b></li> </ul>

# Accountability

## Corporate

REANNZ is a Crown-owned company, listed under schedule 4 of the Public Finance Act 1989 and incorporated under the Companies Act 1993. Its current shareholders are the Minister of Finance and the Minister of Science, Innovation and Technology.

Although REANNZ is not a Crown Entity listed under the Crown Entities Act 2004, it is the intent of the shareholders that it acts in a manner consistent with the Crown Entities Act. REANNZ is subject to the Official Information Act 1982.

The functions and purpose of the company are contained in its Constitution and further augmented by an annual Letter of Expectations from shareholding Ministers.

REANNZ's performance is monitored by the Ministry of Business, Innovation and Employment (MBIE). The Ministry also maintains policy oversight roles with respect to REANNZ's outcomes.

# Reporting

## Annual Report

An Annual Report is made available to Ministers within four months of the end of each financial year. It is to comply with the reporting provisions of the Crown Entities Act 2004, the Companies Act 1993, and the Financial Reporting Act 1993.

## Statement of Intent

A draft Statement of Intent is made available to shareholding Ministers no later than two months prior to the commencement of the first financial year that it covers.

The PBE FRS 48 Service Performance Reporting standard has been applied to the measures and initiatives outlined in the Statement of Intent 2026-2030.

## Statement of Performance Expectations

A draft Statement of Performance Expectations is made available to shareholding Ministers no later than two months prior to the commencement of the financial year.

The PBE FRS 48 Service Performance Reporting standard has been applied to the measures and initiatives outlined in the Statement of Performance Expectations FY2026/27.

## Quarterly reports

Quarterly reports are submitted to MBIE providing provisional financial and non-financial performance data, measured against the forecasts in this Statement of Intent. This information is provided through CFISnet, the Crown's Financial Information System.

## Other information

REANNZ provides other information relating to the affairs of the Company as requested by its shareholding Ministers.



REANNZ